



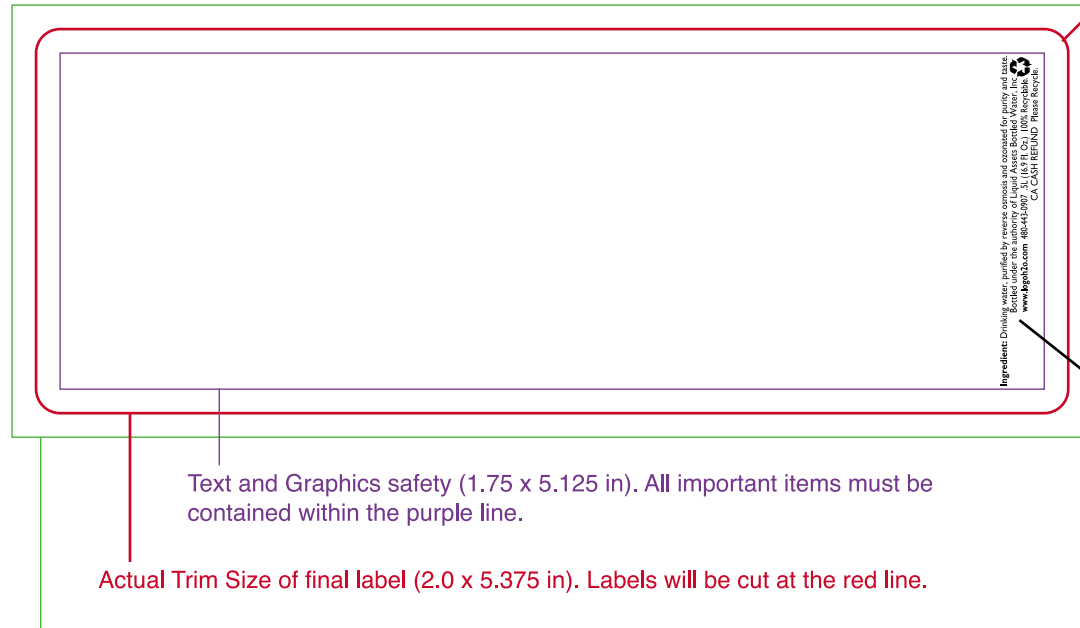
Water Label Art Guidelines

Please e-mail finished artwork files to:

jim@logoh2o.com

.5 LITER (16.9 FL. OZ.)

Label is Waterproof



0.125 in Corner Radius

Text and Graphics safety (1.75 x 5.125 in). All important items must be contained within the purple line.

Actual Trim Size of final label (2.0 x 5.375 in). Labels will be cut at the red line.

Bleed Line (2.25 x 5.625 in). Any graphics or colors that "bleed" off the label must travel to the green line. Any bleed graphics not extending to the green line will not print correctly.

Bottling info.

This can go on either end and is usually added to the finished layout by us. Please keep 0.625" of empty space on either end of the label for this info.

Ingredient: Drinking water, purified by reverse osmosis and ozonated for purity and taste.
Bottled under the authority of Liquid Assets Bottles Water, Inc.
www.logoh2o.com 180445196 1.75 LITER (16.9 FL. OZ.)
LIQUID ASSETS BOTTLED WATER, INC.

Acceptable Art Formats:

We import your art into Adobe Illustrator CS2

- Illustrator: Please convert all type to outlines. provide all placed images (do not embed them)
- EPS
- Photoshop: Saves as an .eps, .tiff or .jpg. 300dpi or greater (anything less might appear pixilated). CMYK color mode.

We do not accept .pdf files. The native files used to create the .pdf file will need to be provided.

Notes:

- Please convert all type to outlines.
- All Pantones Colors (PMS) will be converted to four color builds unless you specifically request PMS colors.
- Please no low res images from the web.
- Include supporting photos and fonts if necessary.
- If provided artwork exceeds 5mg, please provide the artwork on disk. This will be too large to e-mail.

Any questions please feel free to contact **Liquid Assets**